

# PRODUCT FACT SHEET

DEVELOPED BY:



## NeverFade® with Kynar® Façade Restoration Coating System **P-SERIES, A-SERIES**



### PRODUCT DESCRIPTION:

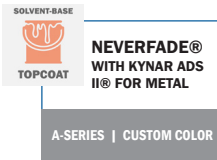
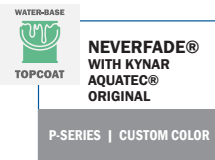
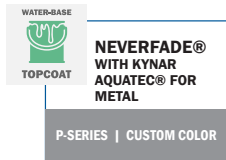
NeverFade® Façade Restoration with Kynar® and Kynar Aquatec® resin is one of APV's most advanced exterior coating chemistries and highly resistant to UV degradation. Offered with a 15 year warranty against fading, NeverFade® has proven its longevity in protecting and preserving industrial and commercial exteriors- even with dark colors and earth-tones.

Along with fade resistance, NeverFade® protects surfaces against algae, fungus, abrasion, dirt pickup, stains, and chalking. It is easily applied in the field using conventional spray, brush or roll application.

### About the chemistry...



Natural elements, such as sunlight, water, wind, and air, drastically break down coatings over time. The heart of the Kynar® PVDF emulsion technology, the key ingredient in the NeverFade® Topcoat, is the carbon-fluorine (C-F) bond. The C-F bond is one of the strongest bonds known and it is the basis for extreme weatherability, withstanding harsh thermal, chemical, and ultraviolet environmental conditions.



### SUBSTRATES:

NeverFade® is recommended for use over a number of different substrates including Wood, Stucco, Steel, Aluminum, Coil Coated Metal, Vinyl, Masonry, Concrete Block, & Fiber Cement. Other substrates are acceptable, contact APV Engineered Coatings' Technical Department for approval and application specifications.



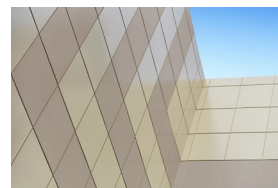
### CUSTOM COLORS:

NeverFade® is custom color matched to order. The color specialists at APV can match most colors available.



### SHEENS:

NeverFade® is available in Eggshell and Semi-gloss sheens. Flat or low-gloss may be formulated under special request.



### PACKAGING:

NeverFade® is ready-to-use as supplied. Packaging sizes include: 1 gallon cans, 5 gallon pails and 55 gallon drums.

## FEATURES:



Exceptional Resistance to UV Degradation

Resistant to Algae & Fungal Growth

Resistant to Abrasion

Resistant to Dirt Pick-up

Resistant to Staining

Resistant to Chalking

Resistant to Mildew

Water-Based & Low VOC

Field-applied

Industry Proven Resin

Inorganic Pigments

Custom Matched Colors