

NEVERFADE®

FAÇADE RESTORATION COATINGS

SMART CHEMISTRY • EXTREME PERFORMANCE

NeverFade® Façade Restoration Coatings with Kynar Aquatec® PVDF resin are superior performance coating systems for architectural use. NeverFade® is proven to significantly extend the life of industrial and commercial building materials for over 20 years.

WITH
KYNAR AQUATEC®
TECHNOLOGY



SSPC PAINT 47 STANDARD

 **WATER
BASED
& LOW ODOR**

**LOW
VOC**
<100 G/L

**15 YEAR
COLOR
WARRANTY**

UV RESISTANT • BLOCKS ALGAE + MOLD
GROWTH • RESISTS DIRT PICK-UP
• WITHSTANDS ABRASION •

ABOUT THE CHEMISTRY

The heart of the Kynar® PVDF emulsion technology is the carbon-fluorine (C-F) bond, which is the key ingredient in NeverFade® formulations. The C-F bond is one of the strongest bonds known and it is the basis for extreme weatherability, withstanding harsh thermal, chemical, and ultraviolet environmental conditions.

INTENDED FOR USE ON

NeverFade® Original: Primed Wood, Stucco, Vinyl, Masonry, Concrete, Fiber Cement and EFIS

NeverFade® Metal Restoration: Primed Steel, Aluminum, Galvanized, Galvalum and Coil Coated Metals

MULTIPLE APPLICATION METHODS



BRUSH ON



ROLL ON



SPRAY ON

CUSTOM COLORS

Custom color matched to order. Standard colors are available in mica or solid options.

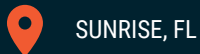
POWERED BY:



VIEW & DOWNLOAD
NEVERFADE LITERATURES

W: NEVERFADECOATINGS.COM
E: EPORCO@APVCOATINGS.COM

FEATURED CASE STUDIES



SUNRISE, FL

JAFco CHILDREN'S
ABILITY CENTER



HONOLULU, HI

15 CRAIGSIDES SENIOR LIVING
COMMUNITY



VALLEJO, CA

SOLANO COMMUNITY COLLEGE



SLEEPY HOLLOW, NY

REGENERON OFFICE BUILDING



TAMPA, FL

WESTIN TAMPA WATERSIDE
HOTEL



ORLANDO, FL

FLORIDA'S ASSOCIATION OF
ROOFING PROFESSIONALS
(FRSA) HEADQUARTERS



ISLAMORADA, FL

PISTORINO AND ALAM
HURRICANE-PROOF
DEMONSTRATION HOUSE



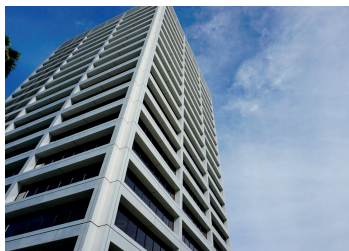
CAVE CREEK, AZ

THE PLAZA AT BLACK
MOUNTAIN SHOPPING CENTER



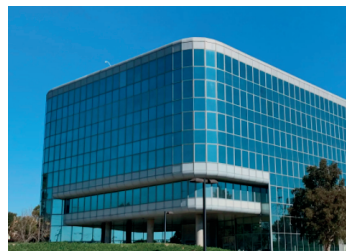
RED FEATHER LAKES, CO

THE GREAT STUPA OF
DHARMAKAYA BUDDHIST
MONUMENT



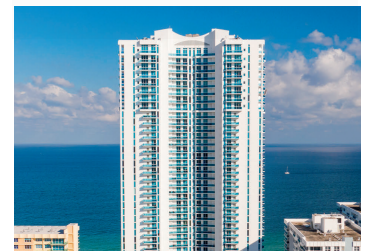
NEWPORT BEACH, CA

IRVINE OFFICE BUILDING



HAWTHORNE, CA

FEDERAL AVIATION
ADMINISTRATION
HEADQUARTERS



HOLLYWOOD BEACH, FL

TRUMP HOLLYWOOD
CONDOMINIUM