

# NEVERFADE®

## EXTERIOR PAINTS

NeverFade® Exterior Paints with Kynar Aquatec® PVDF resin are superior performance coating systems for architectural use. NeverFade® is proven to significantly extend the life of industrial and commercial building materials for over 20 years.



**UV RESISTANT • BLOCKS ALGAE +  
MOLD GROWTH • RESISTS DIRT  
PICK-UP • WITHSTANDS ABRASION**



### ABOUT THE CHEMISTRY

The heart of the Kynar® PVDF emulsion technology is the carbon-fluorine (C-F) bond, which is the key ingredient in NeverFade® formulations. The C-F bond is one of the strongest bonds known and it is the basis for extreme weatherability, withstanding harsh thermal, chemical, and ultraviolet environmental conditions.



### INTENDED FOR USE ON

NeverFade® Original: Primed Wood, Stucco, Vinyl, Masonry, Concrete, Fiber Cement and EFIS

NeverFade® Metal Restoration: Primed Steel, Aluminum, Galvanized, Galvalum and Coil Coated Metals

### CUSTOM COLORS

Custom color matched to order. Standard colors are available in mica or solid options.

POWERED BY:



### MULTIPLE APPLICATION METHODS



VIEW & DOWNLOAD  
NEVERFADE LITERATURES

[NEVERFADEPAINTS.COM](http://NEVERFADEPAINTS.COM)

# FEATURED CASE STUDIES



SUNRISE, FL

JAFCO CHILDREN'S  
ABILITY CENTER



VALLEJO, CA

SOLANO COMMUNITY COLLEGE



MIAMI, FL

MIAMI CHILDREN'S MUSEUM



TAMPA, FL

WESTIN TAMPA WATERSIDE  
HOTEL



ORLANDO, FL

FLORIDA'S ASSOCIATION OF  
ROOFING PROFESSIONALS  
(FRSA) HEADQUARTERS



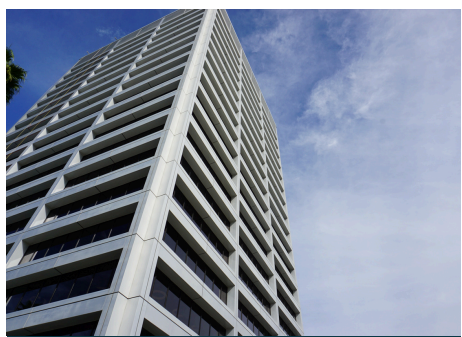
DOBSON, NC

CENTRAL MIDDLE SCHOOL



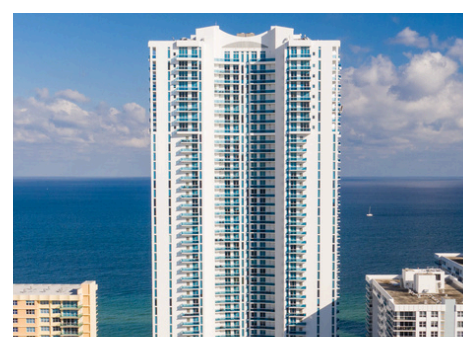
RED FEATHER LAKES, CO

THE GREAT STUPA OF  
DHARMAKAYA BUDDHIST  
MONUMENT



NEWPORT BEACH, CA

IRVINE OFFICE BUILDING



HOLLYWOOD BEACH, FL

TRUMP HOLLYWOOD  
CONDOMINIUM